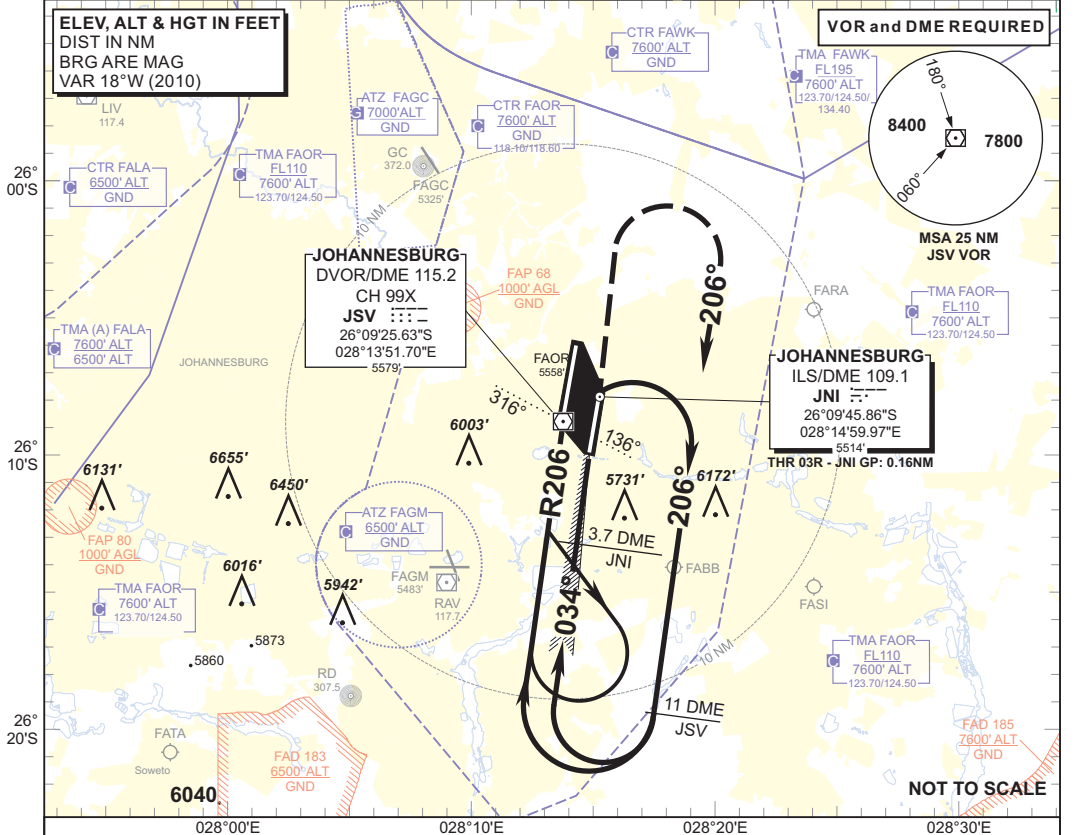


**INSTRUMENT APPROACH CHART** **AERODROME ELEV 5558'**  
 HEIGHTS RELATED TO **THR RWY 03R - ELEV 5510'**

RADAR APP S 124.50 ATIS 126.20  
 E 124.50 115.20  
 W 123.70 SMC 121.90  
 TWR E 118.60  
 W 118.10

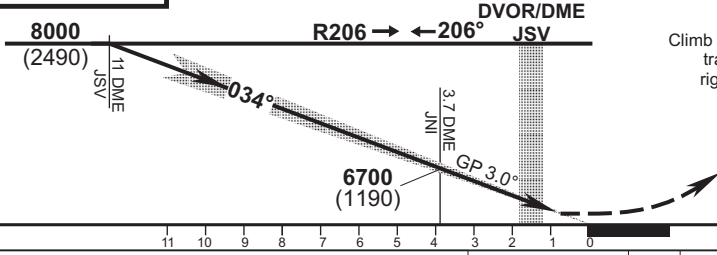
**JOHANNESBURG**  
 (O.R. TAMBO INTERNATIONAL)  
**ILS Z RWY 03R**  
 CAT A - D



<b>JNI DME</b>	3	2	1		
<b>ADVISORY ALT (HGT)</b>	6480 (970)	6160 (650)	5840 (330)		

**TRANSITION ALT 8000**  
**TRANSITION LEVEL ATC**

**INA ALT: 8000 or higher MSA**



**MISSED APPROACH:**  
 Climb to 8000 ALT. Maintain RWY track. Passing 7000 ALT, turn right onto HDG 206°. Passing 11 DME JSV turn right direct to JSV.

**ILS RDH 59**

**THR ELEV 5510**

					<b>GS</b>	KT	80	100	120	140	160	
					3.7 DME JNI to THR	M:S	2:39	2:08	1:46	1:31	1:20	
Straight-in Approach	CAT I	5710 (200)	5710 (200)	5710 (200)	5710 (200)	Rate of descent	FPM	425	531	637	743	849
	CAT II	5610 (100)	5610 (100)	5610 (100)	5610 (100)	<b>NOTE:</b>						
Circling	WEST OF RWY 03/21	6070 (512)		6410 (852)		1. Procedure Turn Approach applicable only within 30° of the OUBD HDG. Use phraseology "Request Procedure Turn Approach".						
	EAST OF RWY 03/21	6050 (492)		6250 (692)		2. CAT II operations and minima must be approved by the SACAA. 3. DME JNI (109.1 MHz) co-located with Glide Path transmitter.						

Location Indicator FAOR / CHANGE: NDB JB/JN & JA decommissioned